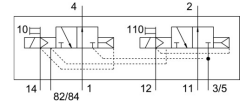
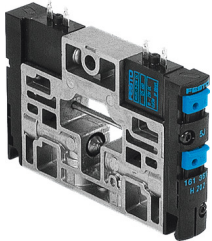


# Air solenoid valve

## CPV14-M1H-2X3-OLS-K-1/8

FESTO

Part number: 559648



### Data sheet

Feature	Value
Valve function	2x3/2, open, monostable
Actuation type	Electrical
Valve size	14 mm
Standard nominal flow rate	800 l/min
Pneumatic working port	G1/8
Operating voltage	24V DC
Operating pressure	-0.9 bar ... 10 bar
Structural design	Piston gate valve
Reset method	Pneumatic spring
Degree of protection	IP65
Nominal width	6 mm
Type code	CPV14
Exhaust air function	Without flow control option
Sealing principle	Soft
Mounting position	Any
Manual override	Detenting Non-detenting
Type of control	Pilot-controlled
Pilot air supply port	External Internal
Flow direction	Non-reversible
Symbol	00991811
Lap	Overlap
Pilot pressure	3 bar ... 8 bar
b-value	0.42
C value	3.2 l/sbar
Switching time off	30 ms
On switching time	24 ms
Duty cycle	100% in combination with holding current reduction
Electrical power consumption	0.65 W
Max. positive test pulse with 0 signal	1400 µs
Max. negative test pulse on 1 signal	400 µs
Operating medium	Compressed air as per ISO 8573-1:2010 [7:4:4]
Information on operating and pilot media	Operation with oil lubrication possible (required for further use)
Vibration resistance	Transport application test with severity level 2 as per FN 942017-4 and EN 60068-2-6

Feature	Value
Shock resistance	Shock test with severity level 2 as per FN 942017-5 and EN 60068-2-27
Corrosion resistance class (CRC)	2 - Moderate corrosion stress
Storage temperature	-20 °C ... 40 °C
Temperature of medium	-5 °C ... 50 °C
Ambient temperature	-5 °C ... 50 °C
Product weight	120 g
Type of mounting	With through-hole
Pilot air port 12/14	Common port
Pilot exhaust air port 82/84	Common port
Pneumatic connection 1	Common port with pressure separation
Pneumatic connection 11	Common port with pressure separation
Pneumatic connection 2	G1/8
Pneumatic port 3/5 combined	Common port
Pneumatic connection 4	G1/8
Note on materials	RoHS-compliant
Seals material	HNBR NBR
Housing material	Die-cast aluminum Brass POM PPS Steel